



DELTA PRIMA
GLOBAL|GROUP

BROCHURE

ELECTRIC TRANSFORMERS

WWW.DELTAPRIMAGLOBALGROUP.COM

WHO ARE WE AND WHY CHOOSE US?



We are an import and export company for industrial materials for the electric and oil sectors. Our solid team of professionals is at your disposal to advise you in an easy and timely way, in all your commercial and technical requirements. As a company we are able to recommend the best products and materials. Additionally, we have the capacity to carry out construction works and manufacture of electric substations and fire fighting systems anywhere in the world. The support of our allies for these projects, whether small or large, allows us to carry out our activities in the highest quality and service standards, with impeccable delivery and guarantee records.

At Delta Prima Global Group, we seek to facilitate the rapprochement between customers and manufacturers, making available to them the latest and most efficient technologies for manufactured products by prestigious brands; ensuring quality, responsibility and reliability in the suppliers of products they offer, because in this increasingly globalized world, it is necessary to have expert professionals who effectively identify production needs, in order to promote greater profitability in our businesses clients.



TABLE OF CONTENTS

| | |
|---|----|
| Who are we and why choose us?..... | 2 |
| Single phase cylindrical transformer..... | 4 |
| Weather / post type..... | 4 |
| Underground type up to 500 kva..... | 5 |
| Pad Mounted Type Transformers..... | 6 |
| Liquid filled pad mounted transformer..... | 8 |
| Three phase transformers immersed in oil..... | 10 |
| 10kv class three phase oil-immersed distribution transformer..... | 10 |
| 20kv class three phase oil-immersed distribution transformer..... | 11 |
| Transformers for distribution of three-phase class immersed in oil..... | 12 |
| Three-phase epoxy resin transformers (dry type)..... | 13 |



SINGLE PHASE CYLINDRICAL TRANSFORMER



WEATHER / POST TYPE

They are transformers that are mainly used to power in the distribution service of aerial electrical networks, both in residential and mixed areas, with commercial loads and light industry, attached to the upper parts of metal, wooden or concrete poles.

MAIN USERS

Its use has become widespread in electrical service networks, such as aerial networks for homes, buildings, farms, shopping centers, workshops and medium-sized industry in general, service to oil wells, industrial complexes, among others.

RANGE OF RATED VALUES

Power: 10a500kVA
 Class: 65 ° C
 High Voltage: 2.4kV to 34.5kV
 Low Voltage: 120 / 240V, 240 / 480V and 277V



Technical Data for single phase pole mounted distribution transformer

| Rated Power (Kva) | High Voltage (V) | Low Voltage (V) | Loss (W) | | Dimension (mm) | | | Weight (Kg) | |
|-------------------|--|-----------------------------------|------------------|------------------|----------------|------|------|-------------|--------------|
| | | | No-load Loss (W) | On-load Loss (W) | W | D | H | Oil Weight | Total Weight |
| 5 | 34500/ 19920 13800/ 7957 13200/ 7620 12470/ 7200 or others | 120 - 240 240 - 480 347 600 | 19 | 75 | 465 | 4885 | 855 | 15 | 92 |
| 10 | | | 36 | 120 | 500 | 525 | 885 | 22 | 150 |
| 15 | | | 50 | 195 | 520 | 565 | 905 | 30 | 210 |
| 25 | | | 80 | 290 | 560 | 590 | 935 | 45 | 258 |
| 37.5 | | | 105 | 360 | 610 | 625 | 935 | 50 | 340 |
| 50 | | | 135 | 500 | 635 | 675 | 1035 | 62 | 395 |
| 75 | | | 190 | 650 | 745 | 840 | 1035 | 88 | 480 |
| 100 | | | 210 | 850 | 770 | 965 | 1135 | 94 | 530 |
| 167 | | | 350 | 1410 | 795 | 890 | 1135 | 138 | 680 |

SINGLE PHASE CYLINDRICAL TRANSFORMER

UNDERGROUND TYPE UP TO 500 KVA

They are transformers that are mainly used to power in the underground network distribution service, both in residential and mixed areas, with commercial loads and light industry.



MAIN USERS

Its use has become widespread in electrical service networks in modern urban residential areas, such as underground networks for homes, buildings, shopping centers, workshops, among others.

RANGE OF RATED VALUES

Power: 15 to 500kVA
Class: 55 ° C or 65 ° C
High Voltage: 2.4kV to 15kV (95kV BIL)
Low Voltage: 120 / 240V, 240 / 480V and 277V
Frequency: 60Hz and 50Hz

Optional accessories for overhead and underground single-phase transformers:

- External switches to operate them safely.
- External spigot switches for safe maintenance.
- Specialized cylinder design according to international standards.
- Primary switches for dual voltages to be externally operated.
- External bearings.
- Arrest bracket for boiling.
- Drain valves and sampling.
- Pressed filters for connections.
- Porcelain bearings for low voltage.
- Non-conductive transformer covers.
- Temperature gauges (applies according to the limitations of the tank measurements).
- Liquid level gauges (applies according to the limitations of tank measurements)
- Vacuum pressure gauge ((applies according to limitations of tank measurements).



DELTA PRIMA
GLOBAL GROUP

PAD MOUNTED TYPE TRANSFORMERS



They are transformers that are used in the distribution service of both internal and external electrical networks. Its design is hermetic and being connected to underground AT and BT lines allows it to be installed in places with public access. They are compact, safe and their comparatively pleasant appearance allows them to be installed in visible places.

They are ideal for urbanizations, buildings, shopping centers, hotel complexes, hospitals, among other types of civil construction.

MAIN USERS:

Electric service companies and the construction industry, oil industry, etc.

RANGE OF RATED VALUES:

Capacity: 75 to 2,000 kVA

Class: 65 ° C

Cooling: Natural (ONAN)

High Voltage: up to 24.9kV (125kV BIL)

Low Voltage: up to 480V

Frequency: 60Hz

PAD MOUNTED TYPE TRANSFORMERS

Optional Accessories for Pad Mounted Transformers:

- Bayonet type fuses.
- Spigot changer.
- Breaker switch for high voltage loads.
- Breaker for low voltage circuits.
- Pressure relief valves.
- Oil gauges.
- Oil filling valves.



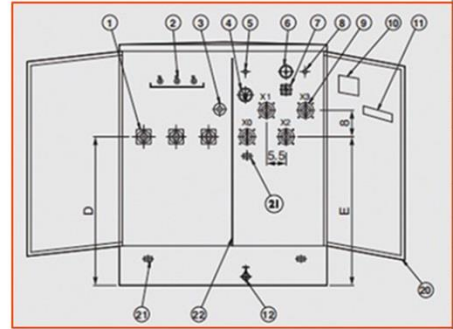
Technical Data for single phase pad mounted distribution transformer

| Rated Power (Kva) | High Voltage (V) | Low Voltage (V) | Loss (W) | | Dimension (mm) | | | Weight (Kg) | |
|-------------------|--|-----------------------------------|------------------|------------------|----------------|------|-----|-------------|--------------|
| | | | No-load Loss (W) | On-load Loss (W) | W | D | H | Oil Weight | Total Weight |
| 15 | 34500/ 19920 13800/ 7957 13200/ 7620 12470/ 7200 or others | 120 - 240 240 - 480 347 600 | 50 | 195 | 610 | 740 | 840 | 45 | 294 |
| 25 | | | 80 | 290 | 610 | 740 | 840 | 68 | 362 |
| 37.5 | | | 105 | 360 | 610 | 760 | 840 | 75 | 476 |
| 50 | | | 135 | 500 | 610 | 810 | 840 | 93 | 553 |
| 75 | | | 190 | 650 | 610 | 860 | 840 | 132 | 672 |
| 100 | | | 210 | 850 | 740 | 940 | 910 | 141 | 742 |
| 167 | | | 350 | 1410 | 760 | 1190 | 910 | 207 | 952 |



DELTA PRIMA
GLOBAL GROUP

LIQUID FILLED PAD MOUNTED TRANSFORMER



| Part # | Name |
|--------|-------------------------------|
| 1 | HV BUSHING |
| 2 | BAY-O-NET FUSE |
| 3 | TAP CHANGER |
| 4 | DIAL TYPE THERMOMETER |
| 5 | I IN FILL PLUG |
| 6 | PRESSURE VACUUM GAUGE |
| 7 | LIQUID LEVEL GAUGE |
| 8 | PRESSURE RELIEF VALVE |
| 9 | LV BUSHING |
| 10 | NAME PLATE |
| 11 | SERIAL NO |
| 12 | I IN DRAIN VALVE WITH SAMPLER |
| 13 | PAD LOCKABLE DOOR HANDLE |
| 14 | LIFTING LUGS |
| 15 | HAND HOLE AND SECURITY COVER |
| 16 | TANK |
| 17 | COOLING RADIATORS |
| 18 | JACKING PAD |
| 19 | JACKING PROVISIONS |
| 20 | DOOR |
| 21 | 2 HOLE HORIZ NEME GRD PAD |
| 22 | METAL LV-HV BARRIER |

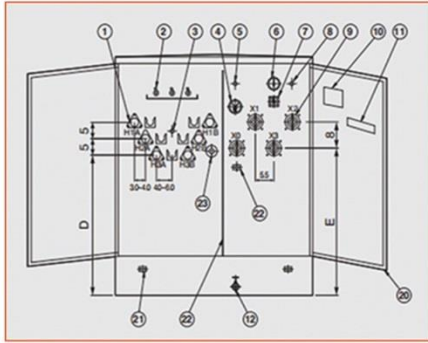
Technical Data for liquid filled pad mounted transformer

| Rated Power (Kva) | High Voltage (V) | Low Voltage (V) | Loss (W) | | Dimension (mm) | | | Weight (Kg) | |
|-------------------|---|----------------------|------------------|------------------|----------------|------|------|-------------|--------------|
| | | | No-load Loss (W) | On-load Loss (W) | W | D | H | Oil Weight | Total Weight |
| 75 | 34500/ 19920 13800/ 7957 13200/ 7620 12470/ 7200 or others | 240 480 480Y/ 277 | 180 | 1250 | 1390 | 910 | 1430 | 120 | 645 |
| 112.5 | | | 200 | 1500 | 1420 | 920 | 1430 | 138 | 729 |
| 150 | | | 280 | 2200 | 1510 | 980 | 1530 | 201 | 989 |
| 225 | | | 400 | 3050 | 1600 | 1000 | 1660 | 230 | 1195 |
| 300 | | | 480 | 3650 | 1660 | 1080 | 1680 | 260 | 1415 |
| 500 | | | 680 | 5100 | 1810 | 1160 | 1790 | 325 | 1905 |
| 750 | | | 980 | 7500 | 2030 | 1300 | 2030 | 535 | 2755 |
| 1000 | | | 1150 | 10300 | 1651 | 1549 | 1854 | 650 | 3235 |
| 1500 | | | 1640 | 14500 | 2210 | 1470 | 2150 | 748 | 5835 |
| 2000 | | | 2160 | 20645 | 2380 | 1600 | 2220 | 950 | 6430 |
| 2500 | 2680 | 27786 | 3070 | 1650 | 2330 | 1020 | 8865 | | |



DELTA PRIMA
GLOBAL GROUP

LIQUID FILLED LOOP FEED PAD MOUNTED TRANSFORMER



| Part # | Name |
|--------|-------------------------------|
| 1 | HV BUSHING WEKKS ONLY |
| 2 | BAY-O-NET FUSE |
| 3 | 4 - POSITION T-BLADE S/W |
| 4 | DIAL TYPE THERMOMETER |
| 5 | I IN FILL PLUG |
| 6 | PRESSURE VACUUM GAUGE |
| 7 | LIQUID LEVEL GAUGE |
| 8 | PRESSURE RELIEF VALVE |
| 9 | LV BUSHING |
| 10 | NAME PLATE |
| 11 | SERIAL NO |
| 12 | I IN DRAIN VALVE WITH SAMPLER |
| 13 | PAD LOCKABLE DOOR HANDLE |
| 14 | LIFTING LUGS |
| 15 | HAND HOLE AND SECURITY COVER |
| 16 | TANK |
| 17 | COOLING RADIATORS |
| 18 | JACKING PAD |
| 19 | JACKING PROVISIONS |
| 20 | DOOR |
| 21 | METAL LV-HV BARRIER |
| 22 | 2 HOLE HORIZ NEME GRD PAD |
| 23 | TAP CHANGER |

Technical Data for liquid filled loop feed pad mounted transformer

| Rated Power (Kva) | High Voltage (V) | Low Voltage (V) | Loss (W) | | Dimension (mm) | | | Weight (Kg) | |
|-------------------|---|----------------------|------------------|------------------|----------------|------|------|-------------|--------------|
| | | | No-load Loss (W) | On-load Loss (W) | W | D | H | Oil Weight | Total Weight |
| 75 | 34500/ 19920 13800/ 7957 13200/ 7620 12470/ 7200 or others | 240 480 480Y/ 277 | 180 | 1250 | 1390 | 910 | 1430 | 120 | 645 |
| 112.5 | | | 200 | 1500 | 1420 | 920 | 1430 | 138 | 729 |
| 150 | | | 280 | 2200 | 1510 | 980 | 1530 | 201 | 989 |
| 225 | | | 400 | 3050 | 1600 | 1000 | 1660 | 230 | 1195 |
| 300 | | | 480 | 3650 | 1660 | 1080 | 1680 | 260 | 1415 |
| 500 | | | 680 | 5100 | 1810 | 1160 | 1790 | 325 | 1905 |
| 750 | | | 980 | 7500 | 2030 | 1300 | 2030 | 535 | 2755 |
| 1000 | | | 1150 | 10300 | 1651 | 1549 | 1854 | 650 | 3235 |
| 1500 | | | 1640 | 14500 | 2210 | 1470 | 2150 | 748 | 5835 |
| 2000 | | | 2160 | 20645 | 2380 | 1600 | 2220 | 950 | 6430 |
| 2500 | 2680 | 27786 | 3070 | 1650 | 2330 | 1020 | 8865 | | |



DELTA PRIMA
GLOBAL GROUP

THREE PHASE TRANSFORMERS IMMERSED IN OIL



10KV CLASS THREE PHASE OIL-IMMERSED DISTRIBUTION TRANSFORMER

These transformers are generally used in the underground network distribution service, both in residential and mixed areas, with load distribution in shopping centers and light and manufacturing industries.

MAIN USERS

Electrical service companies, manufacturing, mining, and construction industries.

RANGE OF RATED VALUES

Power: 150 to 2,000Kva
 Class: 55 ° C or 65 ° C
 High Voltage: 4.8KV to 15kV (95kV BIL)
 Low Voltage: 208/120V, 480/277V
 Frequency: 60Hz and 50Hz



Main technical parameters for 10KV three phase oil immersed distribution transformer

| Rated Power (Kva) | High Voltage (V) | Low Voltage (V) | Connection symbol | Short circuit Impedance (%) | Loss (W) | | No-load current (%) |
|-------------------|--|---------------------|-------------------|-----------------------------|------------------|------------------|---------------------|
| | | | | | No-load Loss (W) | On-load Loss (W) | |
| 30 | 4.16 6 6.3 7.2 10 10.5 11 or others | 0.208 0.4 0.6 | Dyn 11 Yyn0 | 4 4.5 5 | 100 | 600 | 2.1 |
| 50 | | | | | 130 | 870 | 2 |
| 63 | | | | | 150 | 1040 | 1.9 |
| 80 | | | | | 180 | 1250 | 1.8 |
| 100 | | | | | 200 | 1500 | 1.6 |
| 125 | | | | | 240 | 1800 | 1.5 |
| 160 | | | | | 280 | 2200 | 1.4 |
| 200 | | | | | 340 | 2600 | 1.2 |
| 250 | | | | | 400 | 3050 | 1.2 |
| 315 | | | | | 480 | 3650 | 1.1 |
| 400 | | | | | 570 | 4300 | 1 |
| 500 | | | | | 680 | 5150 | 1 |
| 630 | | | | | 810 | 6200 | 0.9 |
| 800 | | | | | 980 | 7500 | 0.8 |
| 1000 | | | | | 1150 | 10300 | 0.7 |
| 1250 | | | | | 1360 | 12000 | 0.6 |
| 1600 | 1640 | 14500 | 0.6 | | | | |
| 2000 | 1940 | 17140 | 0.6 | | | | |
| 2500 | 2300 | 20260 | 0.5 | | | | |



Optional accessories for three-phase oil immersed transformers:

- External switches to operate them safely.
- External spigot switches for safe maintenance.
- Specialized cylinder design according to international standards.
- Primary switches for dual voltages to be externally operated.
- External bearings.
- Arrest bracket for boiling.
- Drain valves and sampling.
- Pressed filters for connections.
- Porcelain bearings for low voltage.
- Non-conductive transformer covers.
- Temperature gauges (applies according to the limitations of the tank measurements).
- Liquid level gauges (applies according to the limitations of tank measurements)
- Vacuum pressure gauge (applies according to limitations of tank measurements).

20KV CLASS THREE PHASE OIL-IMMERSED DISTRIBUTION TRANSFORMER



Main technical parameters for 20KV three phase oil immersed distribution transformer

| Rated Power (Kva) | High Voltage (V) | Low Voltage (V) | Connection symbol | Short circuit Impedance (%) | Loss (W) | | No-load current (%) |
|-------------------|------------------|---------------------|-------------------|-----------------------------|------------------|------------------|---------------------|
| | | | | | No-load Loss (W) | On-load Loss (W) | |
| 30 | 20 | 0.208 0.4 0.6 | Dyn 11 Yyn0 | 4 4.5 5 | 95 | 565 | 1.9 |
| 50 | | | | | 120 | 840 | 1.8 |
| 63 | | | | | 130 | 965 | 1.7 |
| 80 | | | | | 175 | 1170 | 1.6 |
| 100 | | | | | 185 | 1475 | 1.5 |
| 125 | | | | | 220 | 1755 | 1.3 |
| 160 | | | | | 250 | 2160 | 1.3 |
| 200 | | | | | 330 | 2565 | 1.1 |
| 250 | | | | | 395 | 2965 | 1 |
| 315 | | | | | 460 | 3580 | 1 |
| 400 | | | | | 555 | 4265 | 1 |
| 500 | | | | | 670 | 5465 | 1 |
| 630 | | | | | 780 | 6565 | 0.8 |
| 800 | | | | | 950 | 7465 | 0.7 |
| 1000 | | | | | 1140 | 10250 | 0.6 |
| 1250 | | | | | 1345 | 11965 | 0.6 |
| 1600 | | | | | 1630 | 14460 | 0.6 |
| 2000 | | | | | 1930 | 16990 | 0.5 |
| 2500 | 2320 | 20215 | 0.5 | | | | |

TRANSFORMERS FOR DISTRIBUTION OF THREE-PHASE CLASS IMMERSSED IN OIL



They are transformers used and manufactured for electrical transmission, subtransmission substations and large industrial complexes.

MAIN USERS

Electricity generation and transmission companies and the oil industry.

RANGE OF RATED VALUES

Capacity (ONAN): 5,000 to 30,000 kVA

High Voltage: up to 138kV

Low Voltage: According to requirements, generally from 4.16 to 34.5kV or 35KV



Main technical parameters for 35KV three phase oil immersed distribution transformer

| Rated Power (Kva) | High Voltage (V) | Low Voltage (V) | Connection symbol | Short circuit Impedance (%) | Loss (W) | | No-load current (%) |
|-------------------|-------------------------------------|---|-------------------|-----------------------------|------------------|------------------|---------------------|
| | | | | | No-load Loss (W) | On-load Loss (W) | |
| 800 | 35 38.5 44 46 or others | 6.3 6.6 10 10.5 12.47 13.8 | Yd11 Ynd11 | 6.5 7 7.5 8 | 980 | 9350 | 1.05 |
| 1000 | | | | | 1160 | 11500 | 1 |
| 1250 | | | | | 1380 | 13900 | 0.9 |
| 1600 | | | | | 1660 | 16600 | 0.85 |
| 2000 | | | | | 2030 | 18300 | 0.75 |
| 2500 | | | | | 2450 | 19600 | 0.75 |
| 3150 | | | | | 3010 | 23000 | 0.7 |
| 4000 | | | | | 3610 | 27200 | 0.7 |
| 5000 | | | | | 4270 | 31200 | 0.6 |
| 6300 | | | | | 5110 | 34900 | 0.6 |
| 8000 | | | | | 7000 | 38300 | 0.55 |
| 10000 | | | | | 8260 | 45100 | 0.55 |
| 12500 | | | | | 10800 | 53600 | 0.5 |
| 16000 | | | | | 11900 | 65500 | 0.5 |
| 20000 | | | | | 14100 | 79100 | 0.5 |
| 25000 | | | | | 16730 | 93500 | 0.4 |
| 31500 | 20000 | 112200 | 0.4 | | | | |



THREE-PHASE EPOXY RESIN TRANSFORMERS (DRY TYPE)

Dry-type transformers are equipment that uses ambient air as a cooling - as well as insulation - means for its wound conductors and other components.

Its main and usual function is the same as that of transformers immersed in insulating liquid, that is, to adapt the primary voltage levels, such as those used in industries, residences, among others.



Main Users:

- Residential and business condominiums.
- Shopping centers and entertainment centers.
- Hospitals.
- Commercial buildings and industries in general.
- Airports.
- Ships and offshore platforms.

Technical data for 10KV three phase epoxy resin dry type transformer

| Rated Power (Kva) | High Voltage (Kv) | Low Voltage (Kv) | Connection symbol | Short circuit Impedance (%) | Loss (W) | | No-load current (%) |
|-------------------|--|------------------|-------------------|-----------------------------|------------------|------------------|---------------------|
| | | | | | No-load Loss (W) | On-load Loss (W) | |
| 50 | 6 6.3 6.6 10 10.5 11 13.2 or others | 0.4 | Dyn11 Yyn0 | 4 6 | 270 | 990 | 2 |
| 100 | | | | | 400 | 1570 | 1.8 |
| 160 | | | | | 540 | 2120 | 1.4 |
| 200 | | | | | 620 | 2520 | 1.4 |
| 250 | | | | | 720 | 2750 | 1.4 |
| 315 | | | | | 880 | 3460 | 1.2 |
| 400 | | | | | 970 | 3980 | 1.2 |
| 500 | | | | | 1160 | 4880 | 1.2 |
| 630 | | | | | 1340 | 5870 | 1 |
| 800 | | | | | 1520 | 6950 | 1 |
| 1000 | | | | | 1760 | 8120 | 0.8 |
| 1250 | | | | | 2090 | 9690 | 0.8 |
| 1600 | | | | | 2450 | 11730 | 0.8 |
| 2000 | | | | | 3320 | 14450 | 0.6 |
| 2500 | | | | | 4000 | 17170 | 0.6 |

THREE-PHASE EPOXY RESIN TRANSFORMERS (DRY TYPE)

Technical data for 20KV three phase epoxy resin dry type transformer

| Rated Power (Kva) | High Voltage (Kv) | Low Voltage (Kv) | Connection symbol | Short circuit Impedance (%) | Loss (W) | | No-load current (%) |
|-------------------|-------------------|------------------|-------------------|-----------------------------|------------------|------------------|---------------------|
| | | | | | No-load Loss (W) | On-load Loss (W) | |
| 50 | 20 | 0.4 | Dyn11 Yyn0 | 6 8 | 380 | 1300 | 2.4 |
| 100 | | | | | 600 | 2100 | 2.2 |
| 160 | | | | | 750 | 2600 | 1.8 |
| 200 | | | | | 820 | 3100 | 1.8 |
| 250 | | | | | 940 | 3600 | 1.6 |
| 315 | | | | | 1080 | 4300 | 1.6 |
| 400 | | | | | 1280 | 5100 | 1.4 |
| 500 | | | | | 1500 | 6100 | 1.4 |
| 630 | | | | | 1700 | 7200 | 1.2 |
| 800 | | | | | 1950 | 8700 | 1.2 |
| 1000 | | | | | 2300 | 10300 | 1 |
| 1250 | | | | | 2650 | 12150 | 1 |
| 1600 | | | | | 3100 | 14600 | 1 |
| 2000 | | | | | 3600 | 17250 | 0.8 |
| 2500 | | | | | 4300 | 20400 | 0.8 |

Technical data for 35KV three phase epoxy resin dry type transformer

| Rated Power (Kva) | High Voltage (Kv) | Low Voltage (Kv) | Connection symbol | Short circuit Impedance (%) | Loss (W) | | No-load current (%) |
|-------------------|-------------------------|------------------|-------------------|-----------------------------|------------------|------------------|---------------------|
| | | | | | No-load Loss (W) | On-load Loss (W) | |
| 50 | 35 38.5 or others | 0.4 | Dyn11 Yyn0 | 6 | 500 | 1500 | 2.8 |
| 100 | | | | | 700 | 2200 | 2.4 |
| 160 | | | | | 880 | 2960 | 1.8 |
| 200 | | | | | 980 | 3500 | 1.8 |
| 250 | | | | | 1100 | 4000 | 1.6 |
| 315 | | | | | 1310 | 4750 | 1.6 |
| 400 | | | | | 1530 | 5700 | 1.4 |
| 500 | | | | | 1800 | 7000 | 1.2 |
| 630 | | | | | 2070 | 8100 | 1.2 |
| 800 | | | | | 2400 | 9600 | 1.2 |
| 1000 | | | | | 2700 | 11000 | 1 |
| 1250 | | | | | 3150 | 13400 | 0.9 |
| 1600 | | | | | 3600 | 16300 | 0.9 |
| 2000 | | | | | 4250 | 19200 | 0.9 |
| 2500 | | | | | 4950 | 23000 | 0.9 |

TRANSFORMERS ACCESORIES



DELTA PRIMA
GLOBAL GROUP



**OIL TWO-POSITION LOAD
BREAK SWITCH**



**OIL FOUR-POSITION LOAD
BREAK SWITCH**



ELSP FUSE



**TWO & THREE PHASE
MAGNEX INTERRUPTER**



**OFF-CIRCUIT
TAP CHANGER**



BAY-O-NET FUSE



DELTA PRIMA
GLOBAL GROUP

TRANSFORMERS ACCESORIES



**BAY-O-NET FUSE
ASSEMBLY**



SURGE ARRESTER



**DEADBREAK ELBOW
CONNECTOR**



**LOAD BREAK
BUSHING INSERT**



BUSHING WELL



**DUAL-VOLTAGE
SWITCH**



FR3 OIL